



'The Dip Dye Pyramid Shawl'

by Jellina Verhoeff

MATERIALS

Scheepjes Whirl (60% Cotton,
40% Acrylic, 215/225gr/1000m)
1x 554 Tangerine Tambourine
Crochet hook 3.5 mm
Tapestry needle

SIZE

206cm x 97cm centimeter

STITCHES AND ABBREVIATIONS (US TERMS)

ch chain

dc double crochet

st/sts stitch/ stitches

ss slip stitch

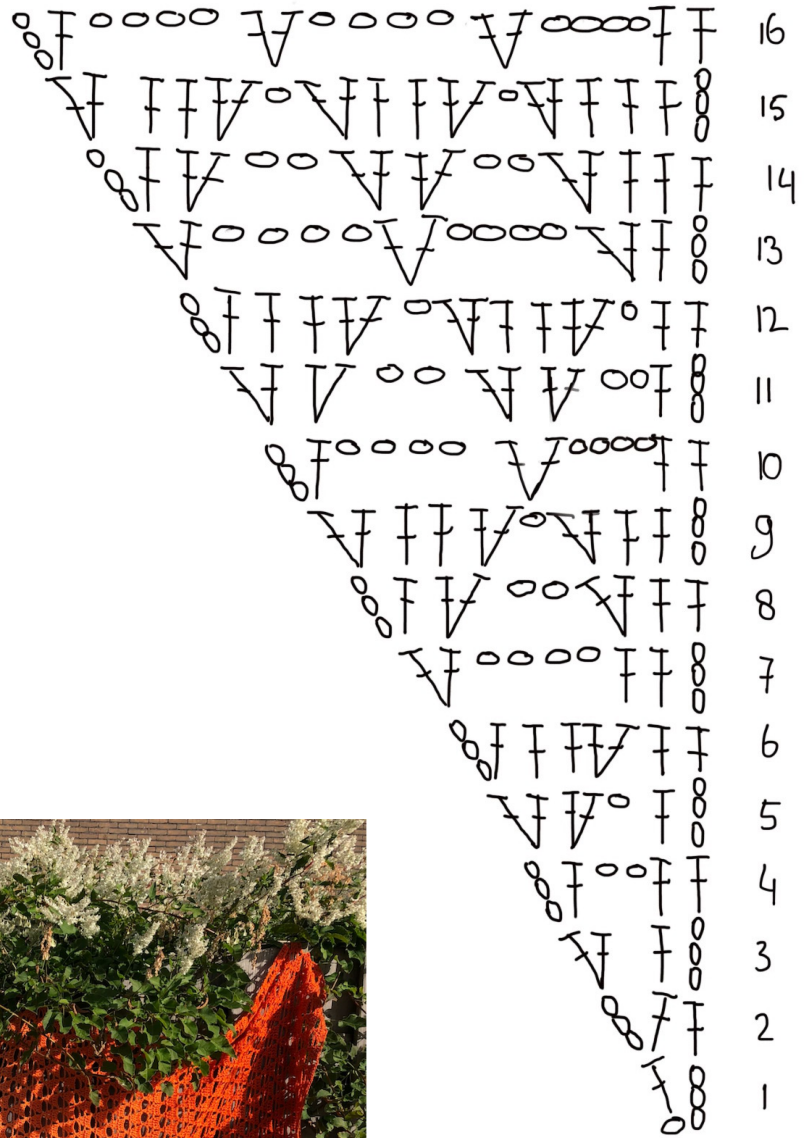


Instructions

ch4
row1 dc in first ch, turn
row2 (ch3, dc), dc in next dc, turn
row3 ch3, dc, (2dc) in last st, turn
row4 (ch3, dc), ch2, skip 1dc, 2dc, turn
row5 ch3, dc, ch1, skip 2ch, (2dc), (2dc) in last dc, turn
row6 (ch3, dc), 2dc, (2dc), skip ch, 2dc, turn
row7 ch3, dc, dc, ch4, skip 4dc, (2dc), turn
row8 (ch3, dc), (2dc), ch2, skip ch4, (2dc), 2dc, turn
row9 ch3, dc, dc, (2dc), ch1, skip ch2, (2dc), 2dc, (2dc), turn
row10 (ch3, dc), ch4, skip 5dc, (2dc) in ch space, ch4, skip 3dc, 2dc, turn
row11 ch3, dc, *ch2, skip ch4, (2dc), (2dc)*, skip ch4, Repeat between ** 1 more time, turn
row12 (ch3, dc), dc, dc, (2dc), ch, skip ch2, *(2dc), dc, dc, (2dc), ch, skip ch2*, dc, dc, turn.
row13 ch3, dc, *(2dc) in ch space, ch4, skip 6dc*, (2dc) in ch space, ch4, skip 5dc, (2dc) in last dc, turn
row14 (ch3, dc), *(2dc), ch2, skip ch4, (2dc)*, repeat between ** 1 more time, 3dc, turn
row15 ch3, 3dc, (2dc), *ch1, skip ch2, (2dc), 2dc, (2dc)* repeat between ** 1 more time, turn
row16 (ch3, dc), *ch4, skip 5dc, (2dc) in ch space*, repeat between ** 1 more time, ch4, skip 4dc, 2dc, turn

row17 Repeat row11 with 1 extra repeat between the **
 row18 Repeat row12 with 1 extra repeat between the **
 row19 Repeat row13 with 1 extra repeat between the **
 row20 Repeat row14 with 1 extra repeat between the **
 row21 Repeat row15 with 1 extra repeat between the **
 row22 Repeat row16 with 1 extra repeat between the **

Repeat row 17 up and until 22 27x



Floral Maze

Design by Johanna Lindahl / Mijo Crochet

Please note that this pattern is for personal use only.
For business or commercial use please contact Mijo Crochet.



This shawl / stole is made with 198 flower squares that are joined as you go when working the last row of each square. This means that you don't have to sew any squares together. It's a lacy pattern where the flowers pop in the center of each square that create this Floral Maze.

Hook: 3.0 mm.

Yarn:

One skein / cake of [Scheepjes Whirl 215 g](#).

The shawl pictured in the first page is made with the color 555, Forbidden Fuchsia.

Size:

This shawl is made of 198 flower squares. It's 6 squares wide and 33 squares long. If you use the same yarn and hook as indicated in this pattern the shawl will have the approx measurements of 185 x 35 cm after blocking. You can easily change size by adding or remove squares. Each color shade of the Whirl is enough for approx 7 squares, except the first and last shade that is enough for approx 12 squares.

Abbreviations (UK terms):

Ch – chain

Ss – slip stitch

Dc – double crochet

BPdc – back post double crochet: Insert hook from back to front to go around post of stitch indicated, work a dc.

Htr – half treble

Tr – treble

Sp - space (e.g. ch-1 sp)

Tips:

- Stitches between () are repeated as many times as indicated after the parenthesis.
- Stitches between { } are made in the same stitch or chain space.
- Stitches between | | indicates how many stitches you should have after completing the row.

If you want to make tassels to the four corners of the shawl, take off and save 1-2 grams of the first color of the skein.

Square A

Row 1:

Ch 5,

{(1 tr + ch 1 + 1 tr + ch 2) 3 times, 1 tr} in the 1st ch.

Ch 1, ss in the 3rd ch in the beginning of the row.

|8 tr, 4 ch-1 sp and 4 ch-2 sp|



Row 2:

Ss in next ch-2 sp. Ch 1 (does not count as a stitch).
{1 htr + 2 tr + ch 2 + 2 tr + 1 htr} in the same ch-2 sp.

(1 ss in next ch-1 sp, {1 htr + 2 tr + ch 2 + 2 tr + 1 htr} in next ch-2 sp) 3 times.

1 ss in next ch-1 sp. Ss in the 1st htr in the beginning of the row.

|16 tr, 8 htr, 4 ss and 4 ch-2 sp|



Row 3:

Ss in next 2 tr, ss in next ch-2 sp. Ch 7 (= 1 dc + ch 6).

(1 BPdc in next **tr in row 1**, ch 1, 1 BPdc in next **tr in row 1**. Ch 6, 1 dc in next ch-2 sp. Ch 6) 3 times.

1 BPdc in next **tr in row 1**, ch 1, 1 BPdc in next **tr in row 1**. Ch 6, ss in the 1st ch in the beginning of the row.

|4 dc, 8 BPdc, 4 ch-1 sp and 8 ch-6 sp|



Back side

Right side

Row 4:

Ss in next ch, ss around the ch-6 sp.

(Ch 7, ss in next ch-6 sp. Ch 8, ss in next ch-6 sp) 3 times.

Ch 7, ss in next ch-6 sp. Ch 8, ss in the 2nd ss in the beginning of the row. Cut yarn.

|8 ss, 4 ch-7 sp and 4 ch-8 sp|

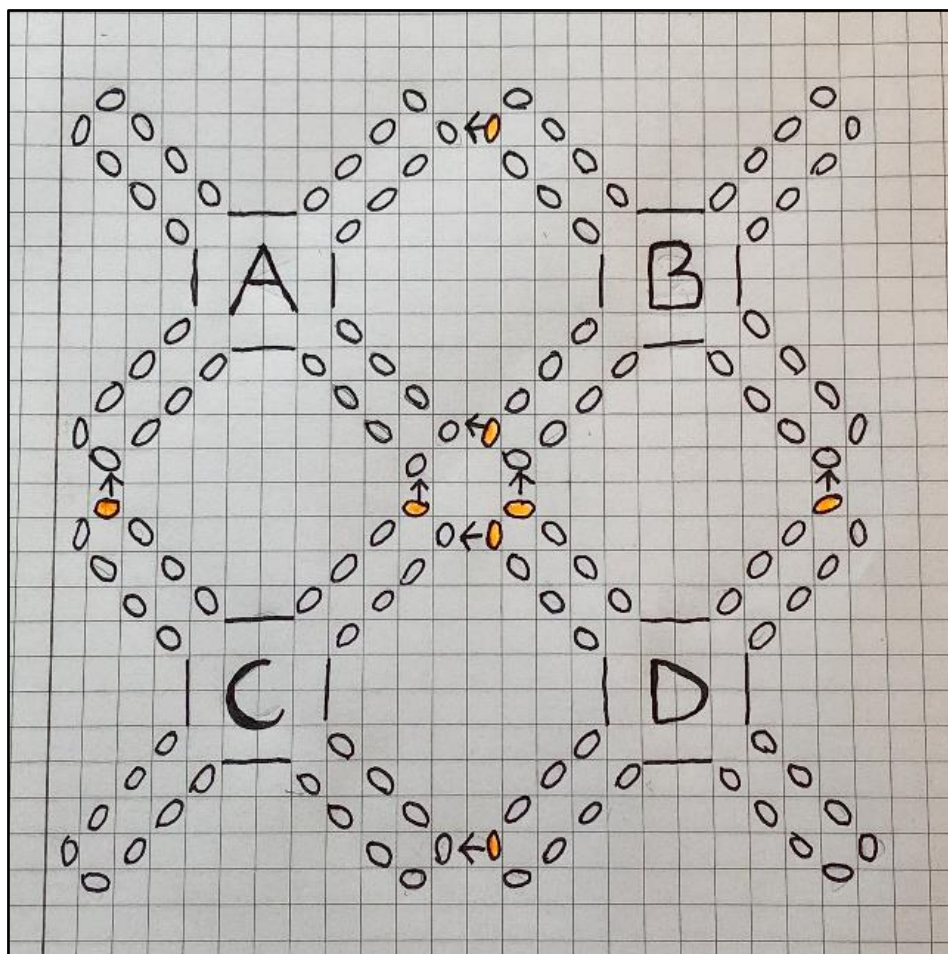


You have now made **square A**. When you crochet the following squares, you will join them with the previous squares when making the last row (row 4). The join is made in the ch-8 sps of the corners and is described on the next page.

The shawl pictured in the first page is 6 squares wide and 33 squares long and one skein of Scheepjes Whirl is enough to make it.

The squares are worked together according to the diagrams below. Square B, C and D is also described in text starting on the next page.

A	B	B	B	B	B
C	D	D	D	D	D
C	D	D	D	D	D
C	D	D	D	D	D



Square B

Row 1–3: Repeat row 1-3 on square A.

Row 4:

Ss in next ch, ss around the ch-6 sp. Ch 7, ss in next ch-6 sp.

Ch 4, ss in the **4th ch** in the ch-8 sp of the corner of square A (picture 1).

Ch 3, ss in next ch-6 sp. Ch 7, ss in next ch-6 sp (picture 2).

Ch 3, ss in the **5th ch** in the ch-8 sp of the next corner of square A (picture 3).

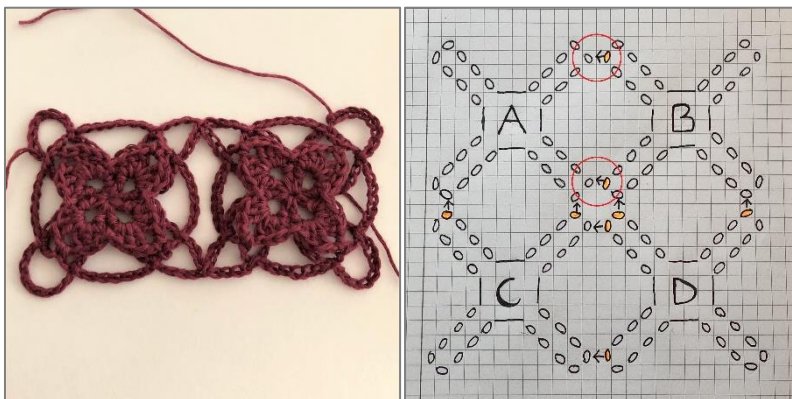
Ch 4, ss in next ch-6 sp. Ch 7, ss in next ch-6 sp. Ch 8, ss in next ch-6 sp. Ch 7, ss in next ch-6 sp. Ch 8, ss in the 2nd ss in the beginning of the row.



1

2

3



Continue according to square B four more times until your work is 6 squares wide.

Square C

Row 1–3: Repeat row 1-3 on square A.

Row 4:

Ss in next ch, ss around the ch-6 sp. Ch 7, ss in next ch-6 sp.

Ch 4, ss in the **4th ch** in the ch-8 sp of the corner of square A (picture 1).

Ch 3, ss in next ch-6 sp. Ch 7, ss in next ch-6 sp.

Ch 3, ss in the **5th ch** in the ch-8 sp of the next corner of square A (picture 2).

Ch 4, ss in next ch-6 sp. Ch 7, ss in next ch-6 sp. Ch 8, ss in next ch-6 sp. Ch 7, ss in next ch-6 sp. Ch 8, ss in the 2nd ss in the beginning of the row.



1

2

Square D

Row 1–3: Repeat row 1-3 on square A.

Row 4:

Ss in next ch, ss around the ch-6 sp. Ch 7, ss in next ch-6 sp.

Ch 4, ss in **4th ch** in the ch-8 sp of the corner of square B (picture 1).

Ch 3, ss in next ch-6 sp. Ch 7, ss in next ch-6 sp.

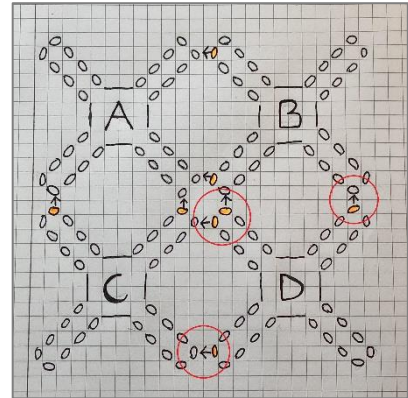
Ch 3, ss in the **5th ch** in the ch-8 sp of the next corner of square B (picture 2).

Ss in the **4th ch** in the ch-8 sp of the next corner of square C (picture 3).

Ch 3, ss in next ch-6 sp. Ch 7, ss in next ch-6 sp.

Ch 3, ss in the **5th ch** in the ch-8 sp of the next corner of square C (picture 4).

Ch 4, ss in next ch-6 sp. Ch 7, ss in next ch-6 sp. Ch 8, ss in the 2nd ss in the beginning of the row.



1

2

3



4

Continue according to square D four more times until your row of squares is 6 squares wide. Repeat square C and D until you got 33 rows of squares.

If you like to add tassels to the four corners of your shawl you can find a simple tutorial how to make them [here](#).



Brick Roads Scarf crochet pattern

by the guywiththehook a.k.a. Mark Roseboom



The Brick roads scarf is a simple crochet pattern that suits a lot of yarntypes. As Scheepjes Whirl's have a amazing colorchange i think this pattern is perfect for a colorful yarn like Whirl. As these kind of yarns really don't need a lot of texture this pattern is perfect for it. The Brick Roads scarf is a simple and yet elegant scarf to wear and can be matched with almost anything. Inspired on an old brickroad in a small village somewhere in the Netherlands where my grandma still lives this pattern has come to my mind. I hope you enjoy it !

Theguywiththehook a.k.a. Mark

Materials :

For this scarf you need one Scheepjes Whirl (215-225 grams – 1000 meters)

The colorway used for this example is : 564 Golden Glowworm

Crochet hook :

Use a crochet hook size 3,5 mm (E).

Tapestry needle

Scissor

Finished Size :

The finished size of the scarf will be 30 cm / 11,8 inch width and 190/200 cm / 75 inches long.

Abbreviations (US) :

[] - total number of stitches on a given row

Ch – chain

SC – single crochet

DC – double crochet

FPDC – Double crochet around the front post of the indicated stitch.

BPDC – Double crochet around the back post of the indicated stitch.

Sp – space

Rep – repeat

Sk – skip

St - stitch

* - mark where the repeat section begins.

Pattern notes :

- At the end of each Row you will have to turn, for this turn you crochet the ch2 you make at the beginning of each next row. So you don't crochet a additional extra ch for the turn.

- You can make this scarf as long or short as you like by continue the repeating part.

- Make sure you make FPDC's at the right side of the work and BPDC's on the wrong side of your work.

Instructions :

Take a crochet hook size 3,5mm and ch57.

Foundation Row : Make a SC in second ch from hook, 55SC along. Turn.[56SC]

Row 1 (RS) : CH2 (does not count as a stitch here and throughout entire pattern), * 10DC, CH1, sk next st, 1SC in next st, CH4, sk next st, 1SC in next st, CH1, sk next st. Rep from * 2 more times. 11DC, turn.

Row 2 (WS) : CH2, 1DC in first st, 9BPDC, * CH1, sk next st, 1SC in next ch1-sp, CH4, 1SC in next ch4-sp, CH1, 1DC in next ch1-sp, 9BPDC. Rep from * 2 more times. CH1, 1DC in last st. Turn.

Row 3 (RS) : CH2, 1DC in first st, 1SC in next ch1-sp, CH1, *sk next st, 9FPDC, 1DC in next ch1-sp, CH1, 1SC in next ch4-sp, CH4, 1SC in next ch1-sp, CH1. Rep from * 2 more times. 8FPDC, 1DC in last st. Turn.

Row 4 (WS) : CH2, 1DC in first st, 7BPDC, *sk next st, CH1, 1SC in next ch1-sp, CH4, 1SC in next ch4-sp, CH1, 1DC in next ch1-sp, 9BPDC. Rep from * 2 more times. CH1, sk next st, 1SC in next ch1-sp, CH2, 1DC in last st. Turn.

Row 5 (RS) : CH2, 1DC in first st, 1SC in next ch2-sp, CH4, 1SC in next ch1-sp, CH1, *sk next st, 9FPDC, 1DC in next ch1-sp, CH1, 1SC in next ch4-sp, CH4, 1SC in next ch1-sp, CH1. Rep from * 2 more times. Sk next st, 6FPDC, 1DC in last st. Turn.

Row 6 (WS) : CH2, 1DC in first st, 5 BPDC. * sk next st, CH1, 1SC in next ch1-sp, CH4, 1SC in next ch4-sp, CH1, 1DC in next 1ch-sp, 9BPDC. Rep from * 2 more times. Sk next st, CH1, 1SC in next ch1-sp, CH4, 1SC in next ch4-sp, CH1, 1DC in last st. Turn.

Row 7 (RS) : CH2, 1DC in first st, 1DC in next ch1-sp, CH1, 1SC in next ch4-sp, CH4, 1SC in next ch1-sp, CH1, * sk next st, 9FPDC, 1DC in next ch1-sp, CH1, 1SC in next ch4-sp, CH4, 1SC in next ch1-sp, CH1. Rep from * 2 more times. Sk next st, 4FPDC, 1DC in last st. Turn.

Row 8 (WS) : CH2, 1DC in first st, 3BPDC, * sk next st, CH1, 1SC in next ch1-sp, CH4, 1SC in next ch4-sp, CH1, 1DC in next ch1-sp, 9BPDC. Rep from * 2 more times. CH1, sk next st, 1SC in next ch1-sp, CH1, 1SC in next ch4-sp, CH1, 1DC in next ch1-sp, 1BPDC, 1DC in last st. Turn.

Row 9 (RS) : CH2, 1DC in first st, 2FPDC, 1DC in next ch1-sp, CH1, 1SC in next ch4-sp, CH4, 1SC in next ch1-sp, CH1, *sk next st, 9FPDC, 1DC in next ch1-sp, CH1, 1SC in next ch4-sp, CH4, 1SC in ch1-sp, CH1. Rep from * 2 more times. Sk next st, 2 FPDC, 1DC in last st. Turn.

Row 10 (WS) : CH2, 1DC in first st, 1BPDC, * sk next st, CH1, 1SC in next ch1-sp, CH4, 1SC in next ch4-sp, CH1, 1DC in next ch1-sp, 9BPDC. Rep from * 2 more times. CH1, sk

next st, 1SC in next ch1-sp, CH4, 1SC in next ch4-sp, CH1, 1DC in next ch1-sp, 3BPDC, 1DC in last st. Turn.

Row 11 (RS) : CH2, 1DC in first st, 4FPDC, 1DC in next ch1-sp, CH1, 1SC in next ch4-sp, CH4, 1SC in next ch1-sp, CH1, *sk next st, 9FPDC, 1DC in next ch1-sp, CH1, 1SC in next ch4-sp, CH4, 1SC in next ch1-sp, CH1. Rep from * one more time .Sk next st, 9FPDC, 1DC in next ch1-sp, CH1, 1SC in next ch4-sp, CH4, 1SC in the bpdc of row 10, 1DC in last st. Turn.

Row 12 (WS) : CH2, 1DC in first st, CH2, 1SC in next ch4-sp, CH2, 1DC in next ch1-sp, 9BPDC, sk next st, CH1, * 1SC in next ch1-sp, CH4, 1SC in next ch4-sp, CH1, 1DC in next ch1-sp, 9BPDC, sk next st, CH1. Rep from * one more time. 1SC in next ch1-sp, CH4, 1SC in next ch4-sp, CH1, 1DC in next ch1-sp, 5BPDC, 1DC in last st. Turn.

Row 13 (RS) : CH2, 1DC in first st, 6FPDC, 1DC in next ch1-sp, CH1, 1SC in next ch4-sp, CH4, 1SC in next ch1-sp, CH1, sk next st, *9FPDC, 1DC in next ch1-sp, CH1, 1SC in next ch4-sp, CH4, 1SC in next ch1-sp, CH1, sk next st. Rep from * 2 more times. 9FPDC, 1DC in next ch2-sp, CH1, 1SC in next ch2-sp, 1DC in last st. Turn.

Row 14 (WS) : CH2, 1DC in first st, CH1, *1DC in next ch1-sp, 9BPDC, sk next st, CH1, 1SC in next ch1-sp, CH4, 1SC in next ch4-sp, CH1. Rep from * 2 more times. 1DC in next ch1-sp, 7BPDC, 1DC in last st. Turn.

Row 15 (RS) : CH2, 1DC in first st, 8FPDC, 1DC in next ch1-sp, *CH1, 1SC in next ch4-sp, CH4, 1SC in next ch1-sp, CH1, sk next st, 9FPDC, 1DC in next ch1-sp. Rep from * 3 more times. 1DC in last st. Turn.

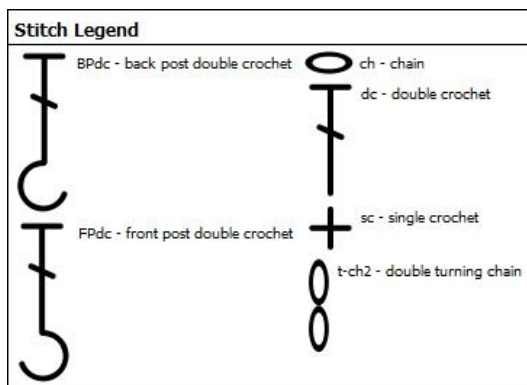
Rep Row 2 – 15 until you reach the desired length you like or when you Whirl has just a few grams of yarn left. For me i have made 19 Repeats and had left 10 grams of yarn. But this is only a guidance if you need a Scheepjes Whirl.

Finishing Row :

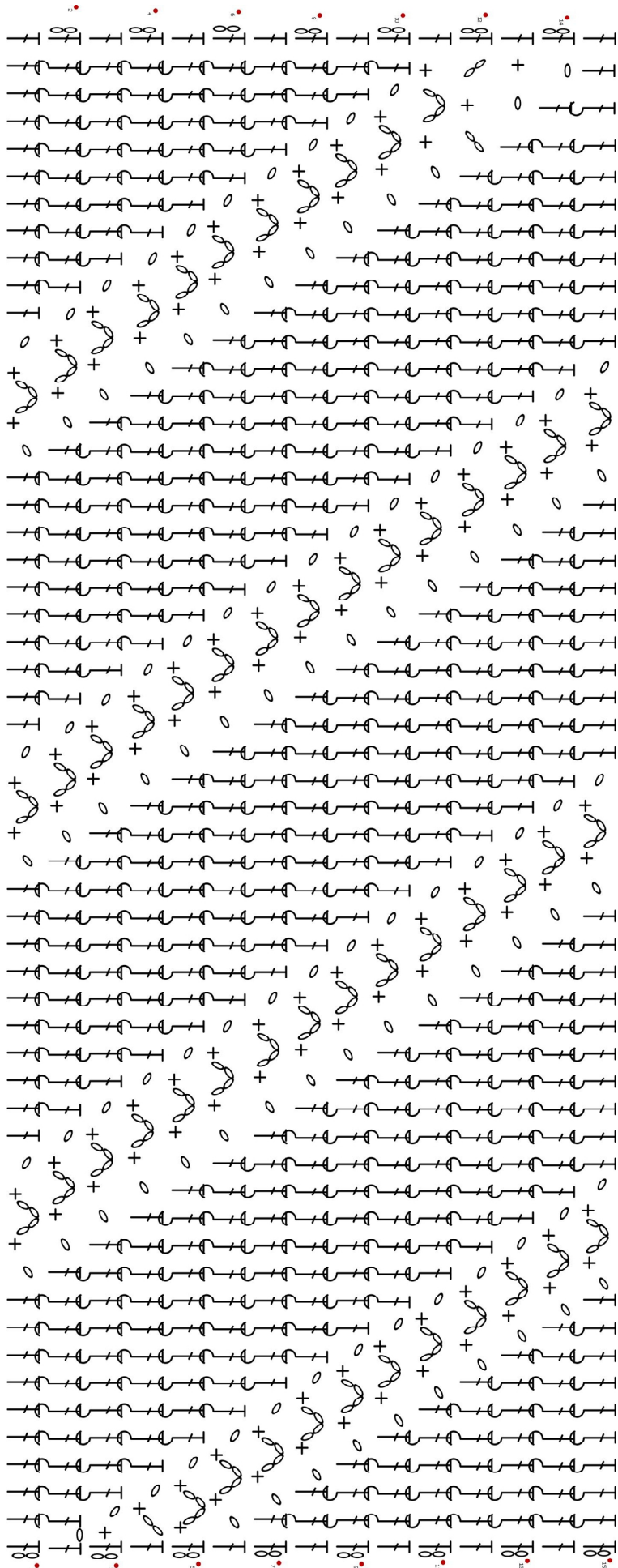
You end with a Row 15.

To finish up the scarf, make a SC in each stich and ch1-sp that comes along. In a ch4-sp you make 2SC. Just crochet along the last row this way and at the end fasten off.

Weave in all ends and block your scarf for a perfect end result.



The chart only shows the first Row and the repeat section.



Designed for Scheepjes Yarns – new Scheepjes Whirl collection.

Designed by : *the guy with the hook* – 2018

<https://theguywiththehook.wordpress.com>

<https://www.instagram.com/theguywiththehook>

<https://www.ravelry.com/projects/theguywiththehook>

<https://www.ravelry.com/designers/mark-roseboom>

<https://www.facebook.com/theguywiththehook>

All copyrights and terms of use are with me. So please do not copy, share or take advantage of this pattern. If noted, legal actions are taken by the designer.

Feel free to sell made items out of this pattern. I would love if you tag or make a reference to me as a designer when showing your wip's or finished projects. Please use the #brickroadsscarf on social media to share this pattern all in one simple search.

Last but not least, thank you so much for making this pattern. A lot of effort, time and creativity are in this little piece of art and every single thing that comes out of it makes it all the work so worth it.