

3910

JUSTAUCORPS COL MONTANT - HIGH NECK HALTER LEOTARDS

JADE

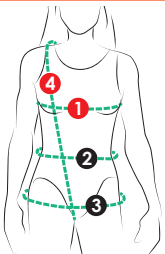
Choix de maillots sans manche avec col haut boutonné au dos, empiècements en filet, doublé au devant, dos ouvert et finition avec bande ou élastique à la cuisse. A: Découpe au-dessus du buste B: Découpe asymétrique. Compatible à la taille avec la jupe de la robe Tessa (3891).

28

tailles - sizes

Choice of leotards with high neck, keyhole back and choice of upper bust mesh insert designs. Leg openings can be finished with and elastic or band. A: Straight seaming across upper bust B: Asymmetrical seaming towards the collar. Both views have a waist seam that is compatible with the Tessa (3891) skirt (sold separately).

MESURES DU CORPS (FILLES) - BODY MEASUREMENTS (GIRLS)

Âge approximatif - Approximate age	2	3	4	5	6	7	8	9	10	11	12	13	
Tailles européennes - European sizes	92	98	104	112	119	127	135	142	146	150	152	155	
TAILLE JALIE - JALIE SIZES	F	G	H	I	J	K	L	M	N	O	P	Q	
	1 TOUR DE POITRINE FULL BUST	21"	22"	23"	24"	25"	26"	27"	28"	29"	30"	31"	32"
	2 TOUR DE TAILLE NATURAL WAIST	20"	20 1/2"	21"	21 1/2"	22"	22 1/2"	23"	23 3/4"	24 1/2"	25 1/4"	25 3/4"	26 1/2"
	3 TOUR DES HANCHES FULL HIPS	22"	23"	24"	25"	26"	27"	28"	29 1/2"	30 1/2"	32"	33"	34 1/2"
	4 TRONC (DEVANT+DOS) TORSO (FRONT+BACK)	35"	37"	39"	41"	43"	45"	47"	48 3/4"	50 1/2"	52"	53 3/4"	55 1/2"
		53 cm	56 cm	58 cm	61 cm	64 cm	66 cm	69 cm	71 cm	74 cm	76 cm	79 cm	81 cm
		51 cm	52 cm	53 cm	55 cm	56 cm	57 cm	58 cm	60 cm	62 cm	64 cm	66 cm	67 cm
		56 cm	58 cm	61 cm	64 cm	66 cm	69 cm	71 cm	74 cm	78 cm	81 cm	84 cm	87 cm
		89 cm	94 cm	99 cm	104 cm	109 cm	114 cm	119 cm	123 cm	128 cm	132 cm	137 cm	141 cm

TISSU REQUIS - YARDAGE

60" 150 cm	TISSU PRINCIPAL MAIN FABRIC	3/4 yd	1 yd	1 yd	1 yd	1 yd	1 yd	1 yd	1 yd	1 yd	1 yd	1 yd	1 1/4 yd
			0.65 m	0.70 m	0.70 m	0.70 m	0.75 m	0.75 m	0.75 m	0.80 m	0.85 m	0.90 m	0.90 m
Tricot avec spandex, extensible en largeur ET en longueur (nylon/polyester+spandex, velours extensible).	FILET EXTENSIBLE STRETCH MESH	1/2 yd	1/2 yd	1/2 yd	1/2 yd	1/2 yd	1/2 yd	1/2 yd	1/2 yd	1/2 yd	1/2 yd	1/2 yd	1/2 yd
		0.25 m	0.25 m	0.25 m	0.25 m	0.30 m	0.30 m	0.30 m	0.30 m	0.30 m	0.35 m	0.35 m	0.35 m
Knit with spandex with stretch across the width AND in the length (nylon/polyester + spandex, stretch velvet)	COL + BANDES CONTRASTANTS CONTRAST COLLAR + LEG BANDS	1/4 yd	1/4 yd	1/4 yd	1/4 yd	1/4 yd	1/4 yd	1/4 yd	1/4 yd	1/4 yd	1/4 yd	1/4 yd	1/4 yd
		0.15 m	0.15 m	0.15 m	0.15 m	0.15 m	0.15 m	0.15 m	0.15 m	0.15 m	0.15 m	0.15 m	0.15 m
50%	ÉLASTICITÉ MINIMUM REQUISE (LARGEUR ET LONGUEUR) MINIMUM STRETCH REQUIRED (WIDTH AND LENGTH)	VOTRE TISSU DEVRAIT S'ÉTIRER YOUR FABRIC SHOULD STRETCH										JUSQU'ICI TO HERE	

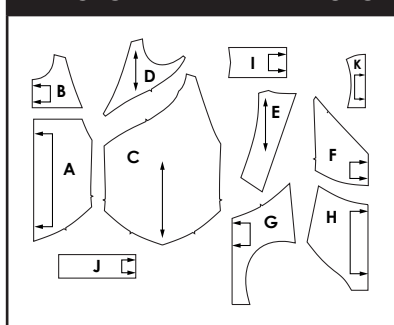
MESURES DU CORPS (FEMMES) - BODY MEASUREMENTS (WOMEN)

Taille US APPROX. US size	2	4	6	8	10	12	14	16	18	20	22	24				
Prêt-à-porter APPROX. RTW size	XS	S		M		L		XL		2XL						
Tailles euro - European sizes	34	36	38	40	42	44	46	48	50	52	54	56				
TAILLE JALIE - JALIE SIZES	R	S	T	U	V	W	X	Y	Z	AA	BB	CC	DD	EE	FF	GG
1 TOUR DE POITRINE FULL BUST	33"	34"	35"	36"	37"	38"	39"	40"	41 1/2"	42 3/4"	44"	45 1/2"	46 3/4"	48 1/4"	49 1/2"	51"
	84 cm	86 cm	89 cm	91 cm	94 cm	96 cm	99 cm	102 cm	106 cm	109 cm	112 cm	116 cm	119 cm	123 cm	126 cm	130 cm
2 TOUR DE TAILLE NATURAL WAIST	27"	28"	29"	30"	31"	32"	33"	34"	35 1/4"	36 1/2"	37 3/4"	39"	40 1/4"	41 1/2"	42 3/4"	44"
	69 cm	71 cm	74 cm	76 cm	78 cm	81 cm	84 cm	86 cm	89 cm	93 cm	96 cm	99 cm	102 cm	105 cm	109 cm	112 cm
3 TOUR DES HANCHES FULL HIPS	36"	37"	38"	39"	40"	41"	42"	43"	44 1/2"	45 3/4"	47"	48 1/2"	49 3/4"	51 1/4"	52 3/4"	54"
	91 cm	94 cm	96 cm	99 cm	102 cm	104 cm	106 cm	109 cm	113 cm	116 cm	120 cm	123 cm	126 cm	130 cm	134 cm	137 cm
4 TRONC (DEVANT+DOS) TORSO (FRONT+BACK)	57 1/4"	59"	59 1/2"	60"	60 1/2"	61"	61 1/2"	62"	62 3/4"	63 3/4"	64 1/4"	65 1/2"	66 1/4"	67 1/4"	68 1/4"	69"
	145 cm	150 cm	152 cm	155 cm	157 cm	160 cm	161 cm	159 cm	161 cm	163 cm	165 cm	167 cm	169 cm	171 cm	173 cm	175 cm

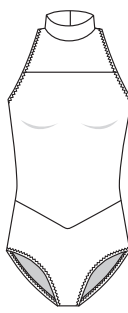
TISSU REQUIS - YARDAGE

TISSU PRINCIPAL MAIN FABRIC	1 1/4 yd	1 1/4 yd	1 1/4 yd	1 1/4 yd	1 1/4 yd	1 1/4 yd	1 1/4 yd	1 1/4 yd	1 1/4 yd	1 1/4 yd	1 1/4 yd	1 1/4 yd	1 1/4 yd	1 1/4 yd	1 1/4 yd	1 1/4 yd
	0.95 m	1.00 m	1.00 m	1.00 m	1.05 m	1.05 m	1.05 m	1.05 m	1.05 m	1.05 m	1.10 m	1.10 m	1.10 m	1.10 m	1.10 m	1.10 m
FILET MESH	1/2 yd	1/2 yd	1/2 yd	1/2 yd	1/2 yd	1/2 yd	1/2 yd	1/2 yd	1/2 yd	1/2 yd	1/2 yd	1/2 yd	1/2 yd	1/2 yd	1/2 yd	1/2 yd
	0.35 m	0.40 m	0.40 m	0.40 m	0.40 m	0.40 m	0.40 m	0.40 m	0.40 m	0.40 m	0.40 m	0.40 m	0.45 m	0.45 m	0.45 m	0.45 m
COL + BANDES CONTRASTANTS CONTRAST COLLAR + LEG BANDS	1/4 yd	1/4 yd	1/4 yd	1/4 yd	1/4 yd	1/4 yd	1/4 yd	1/4 yd	1/4 yd	1/4 yd	1/4 yd	1/4 yd	1/4 yd	1/4 yd	1/4 yd	1/4 yd
	0.15 m	0.15 m	0.15 m	0.15 m	0.15 m	0.15 m	0.15 m	0.20 m	0.20 m	0.20 m	0.20 m	0.20 m	0.20 m	0.20 m	0.20 m	0.20 m

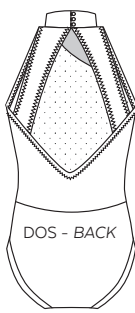
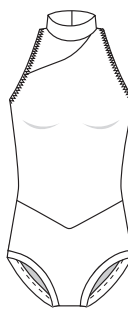
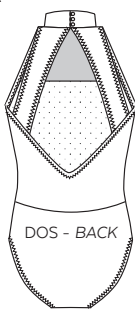
PIÈCES - PATTERN PIECES



A



B



MERCERIE - NOTIONS

ÉLASTIQUE 1 cm (3/8") ELASTIC		BOUTONS 1 cm 3/8" BUTTONS		DOUBLURE LINING	
F - R	S - GG	F - L	M - GG	F - N	S - GG
2,5 m (2 3/4 yd)	3,5 m (4 yd)	2	3	50 cm (20")	70 cm (28")
ÉLASTIQUE 3 mm (ou cordon élastique) pour l'attache au col (1/8") ELASTIC (or elastic cord) to make button loops at collar back				F - GG 15 cm (6")	



PRÊT À COUDRE // READY TO SEW
ressources de couture (6 mm / 1/4") incluses dans le patron
6 mm / 1/4" seam allowances included in the pattern



8303910

Jalie
PATRONS DE COUTURE
SEWING PATTERNS

© 2019 LES PATRONS JALIE INC.
www.jalie.com
IMPRIMÉ AU CANADA / PRINTED IN CANADA