

3901

JUSTAUCORPS DE GYMNASTIQUE - GYMNASTICS LEOTARDS

KATE

Maillot de gymnastique avec encolure en V arrondi, découpe en V inversé au devant et au dos, appliqués facultatifs à la taille et à l'encolure pour transformer la silhouette. A: sans manches, emmanchure finie avec bordure B: avec manche trois-quarts.

28


tailles - sizes

Gymnastics leotards with bound neckline, leg openings finished with elastics. Rounded V neckline, inverted-V seaming at front and back and optional appliqués at waist and neck that transform the silhouette. A: sleeveless with bound armhole B: with three-quarter sleeve.

MESURES DU CORPS (FILLES) - BODY MEASUREMENTS (GIRLS)

Âge approximatif - Approximate age	2	3	4	5	6	7	8	9	10	11	12	13	
Tailles européennes - European sizes	92	98	104	112	119	127	135	142	146	150	152	155	
TAILLE JALIE - JALIE SIZES	F	G	H	I	J	K	L	M	N	O	P	Q	
	1 TOUR DE POITRINE FULL BUST	21"	22"	23"	24"	25"	26"	27"	28"	29"	30"	31"	32"
	2 TOUR DE TAILLE NATURAL WAIST	20"	20 1/2"	21"	21 1/2"	22"	22 1/2"	23"	23 3/4"	24 1/2"	25 1/4"	25 3/4"	26 1/2"
	3 TOUR DES HANCHES FULL HIPS	22"	23"	24"	25"	26"	27"	28"	29 1/2"	30 1/2"	32"	33"	34 1/2"
	4 TRONC (DEVANT+DOS) TORSO (FRONT+BACK)	35"	37"	39"	41"	43"	45"	47"	48 3/4"	50 1/2"	52"	53 3/4"	55 1/2"

TISSU REQUIS - YARDAGE

 60" 150 cm	TISSU PRINCIPAL MAIN FABRIC	1/2 yd	1/2 yd	3/4 yd	3/4 yd	3/4 yd	3/4 yd	3/4 yd	3/4 yd	3/4 yd	1 yd	1 yd	1 yd
		0.45 m	0.45 m	0.50 m	0.55 m	0.55 m	0.65 m	0.65 m	0.65 m	0.65 m	0.70 m	0.70 m	0.75 m
Tricot avec spandex, extensible en largeur ET en longueur (nylon+spandex, polyester+spandex, mystique). Knit with spandex with stretch across the width AND in the length (nylon+spandex, polyester+spandex, mystique)	EMPIÈCEMENT (SANS MANCHES) YOKE (SLEEVELESS)	1/2 yd	1/2 yd	1/2 yd	1/2 yd	1/2 yd	1/2 yd	1/2 yd	1/2 yd	1/2 yd	1/2 yd	1/2 yd	1/2 yd
		0.25 m	0.25 m	0.25 m	0.25 m	0.25 m	0.30 m	0.30 m	0.30 m	0.30 m	0.30 m	0.30 m	0.35 m
	EMPIÈCEMENT + MANCHE YOKE + SLEEVE	1/2 yd	1/2 yd	1/2 yd	1/2 yd	1/2 yd	1/2 yd	1/2 yd	1/2 yd	3/4 yd	3/4 yd	3/4 yd	3/4 yd
		0.35 m	0.35 m	0.40 m	0.40 m	0.40 m	0.45 m	0.45 m	0.45 m	0.50 m	0.50 m	0.50 m	0.55 m

50% ÉLASTICITÉ MINIMUM REQUISE (LARGEUR ET LONGUEUR)
MINIMUM STRETCH REQUIRED (WIDTH AND LENGTH)

VOTRE TISSU DEVRAIT S'ÉTIRER
YOUR FABRIC SHOULD STRETCH

JUSQU'ICI
TO HERE

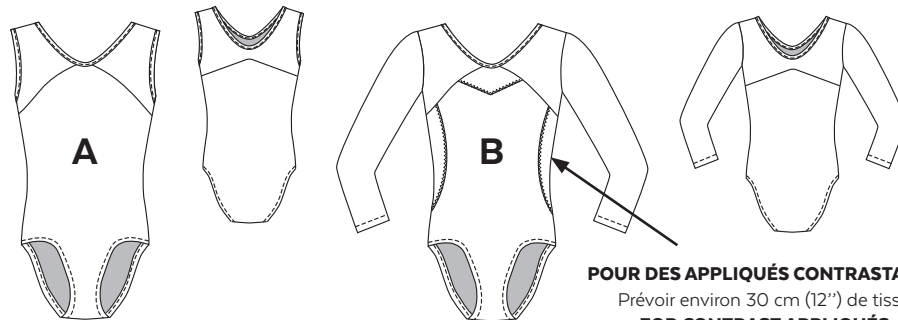
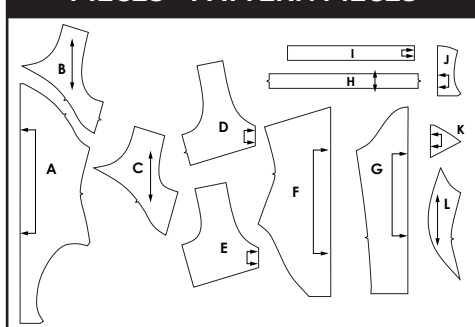
MESURES DU CORPS (FEMMES) - BODY MEASUREMENTS (WOMEN)

Taille US APPROX. US size	2	4	6	8	10	12	14	16	18	20	22	24				
Prêt-à-porter APPROX. RTW size	XS		S		M		L		XL		2XL					
Tailles euro - European sizes	34	36	38	40	42	44	46	48	50	52	54	56				
TAILLE JALIE - JALIE SIZES	R	S	T	U	V	W	X	Y	Z	AA	BB	CC	DD	EE	FF	GG
1 TOUR DE POITRINE FULL BUST	33"	34"	35"	36"	37"	38"	39"	40"	41 1/2"	42 3/4"	44"	45 1/2"	46 3/4"	48 1/4"	49 1/2"	51"
2 TOUR DE TAILLE NATURAL WAIST	27"	28"	29"	30"	31"	32"	33"	34"	35 1/4"	36 1/2"	37 3/4"	39"	40 1/4"	41 1/2"	42 3/4"	44"
3 TOUR DES HANCHES FULL HIPS	36"	37"	38"	39"	40"	41"	42"	43"	44 1/2"	45 3/4"	47"	48 1/2"	49 3/4"	51 1/4"	52 3/4"	54"
4 TRONC (DEVANT+DOS) TORSO (FRONT+BACK)	57 1/4"	59"	59 1/2"	60"	60 1/2"	61"	61 1/2"	62"	62 3/4"	63 3/4"	64 1/4"	65 1/2"	66 1/4"	67 1/4"	68 1/4"	69"

TISSU REQUIS - YARDAGE

TISSU PRINCIPAL MAIN FABRIC	1 yd	1 yd	1 yd	1 yd	1 yd	1 yd	1 yd	1 yd	1 yd	1 yd	1 yd	1 yd	1 yd	1 yd	1 yd	1 yd
	0.75 m	0.75 m	0.75 m	0.75 m	0.75 m	0.75 m	0.80 m	0.80 m	0.80 m	0.80 m	0.80 m	0.80 m	0.85 m	0.85 m	0.85 m	0.85 m
EMPIÈCEMENT (SANS MANCHES) YOKE (SLEEVELESS)	1/2 yd	1/2 yd	1/2 yd	1/2 yd	1/2 yd	1/2 yd	1/2 yd	1/2 yd	1/2 yd	1/2 yd	1/2 yd	1/2 yd	1/2 yd	1/2 yd	1/2 yd	1/2 yd
	0.35 m	0.35 m	0.35 m	0.35 m	0.35 m	0.35 m	0.35 m	0.35 m	0.40 m	0.40 m	0.40 m	0.40 m	0.40 m	0.40 m	0.40 m	0.40 m
EMPIÈCEMENT + MANCHE YOKE + SLEEVE	3/4 yd	3/4 yd	3/4 yd	3/4 yd	3/4 yd	3/4 yd	3/4 yd	3/4 yd	3/4 yd	3/4 yd	1 yd	1 yd	1 yd	1 yd	1 yd	1 yd
	0.55 m	0.55 m	0.55 m	0.55 m	0.55 m	0.55 m	0.55 m	0.65 m	0.65 m	0.65 m	0.70 m	0.70 m	0.75 m	0.75 m	0.75 m	0.75 m

PIÈCES - PATTERN PIECES



POUR DES APPLIQUÉS CONTRASTANTS
Prévoir environ 30 cm (12") de tissu
FOR CONTRAST APPLIQUÉS
You will need approximately
30 cm (12") of fabric

MERCERIE
NOTIONS

DOUBLURE - LINING

F-R

15 cm (6")

ÉLASTIQUE 1 cm
(3/8") ELASTIC

F-R

S - GG

2,5 m (2 3/4 yd)

3,30 m (3 1/2 yd)



PRÊT À COUDRE // READY TO SEW
ressources de couture (6 mm / 1/4") incluses dans le patron
6 mm / 1/4" seam allowances included in the pattern



8203901

Jalie
PATRONS DE COUTURE
SEWING PATTERNS

© 2019 LES PATRONS JALIE INC.

www.jalie.com

IMPRIMÉ AU CANADA / PRINTED IN CANADA